

60
or older

1 in 4 Ohioans, or about 3 million people, are aged 60 or older

Ohio House District 87 Legislative Fact Sheet



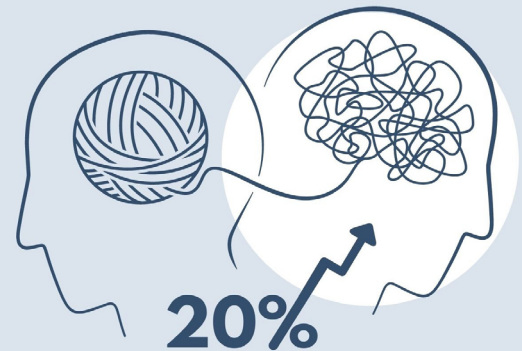
Representative Riordan McClain

2023

Age	Number	District %	State %
Under 5	6,158	5.4%	5.9%
5-17	18,785	16.6%	16.5%
18-34	20,430	18.0%	22.1%
35-64	45,801	40.4%	38.5%
65+	22,261	19.6%	17.0%

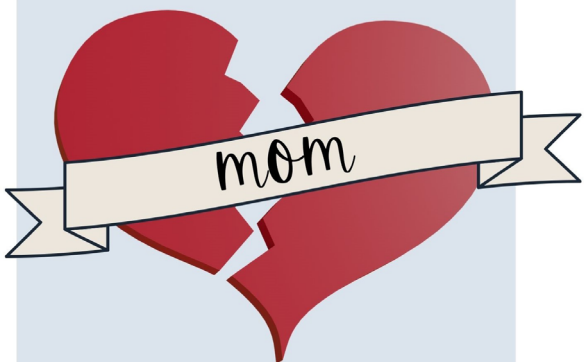
Race	Number	District %	State %
Black African American	837	0.7%	12.3%
American Indian Alaskan Native	47	0.0%	0.2%
Asian	625	0.5%	2.4%
Native Hawaiian Pacific Islander	3	<0.05%	0.03%
White	108,496	95.6%	79.6%
Two or more races	2,941	2.5%	4.3%
Some other race	486	0.4%	1.2%
Black, Indigenous, People of Color, total	5,825	5.1%	22.2%

Ethnicity	Number	District %	State %
Hispanic Latino of any race	2,325	2.0%	4.1%



Ohio adults who reported frequent poor mental health days increased by 20% since 2011

5,200+ Ohioans died of drug overdose in 2020



Ohio maternal mortality rates more than doubled between 2008 and 2018

Education	Number	District %	State %
Less than a high school diploma	7,374	9.2%	8.9%
High school diploma or equivalent	36,715	45.8%	32.6%
Associate's degree or some college	23,389	29.2%	28.8%
Bachelor's degree or higher	12,721	15.9%	29.7%

61% of those maternal deaths were preventable

Ohio House District 87 Legislative Fact Sheet



2023

Representative Riordan McClain



45% of Ohioans aged 16-64 and living in poverty worked at least part-time for at least part of the year



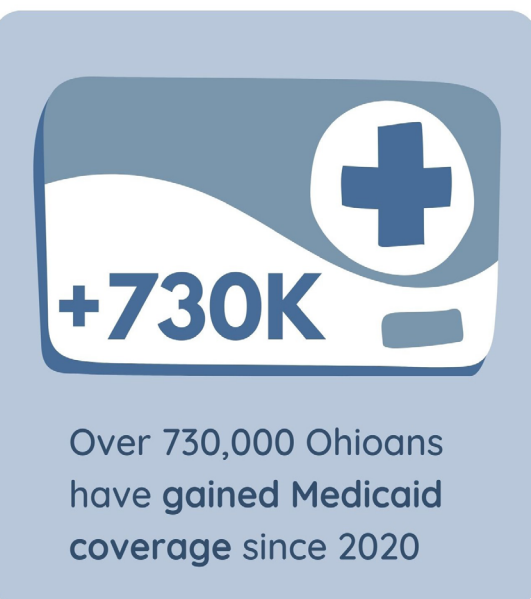
Employment	Number	District %	State %
Persons 16+ in the Labor Force	56,540	62.5%	62.6%
<small>Labor Force includes adults who are employed and those unemployed but actively looking for work</small>			

Poverty	Number	District %	State %
Persons living in poverty	11,732	10.5%	13.4%
Persons in or near poverty	34,368	30.8%	29.9%
Persons in deep poverty	4,830	4.3%	6.1%
<small>In or near poverty: under 200% federal poverty threshold Deep poverty: 50% federal poverty threshold</small>			



Older adults are more likely than younger people to struggle with housing affordability

Housing affordability	Number	District %	State %
Owner occupied households in unaffordable housing	5,180	15.0%	17.2%
Renter occupied households in unaffordable housing	3,759	36.7%	43.8%
<small>Housing is considered unaffordable if housing costs are more than 30% of the household income</small>			



Benefits Access	Number	District %	State %
Medicaid health coverage	18,866	16.8%	17.7%
No health insurance	8,045	7.2%	6.3%
Households receiving social security (OASDI)	16,815	36.4%	31.7%
Households receiving SNAP	5,254	11.4%	13.0%



More than 75% of Ohio SNAP households had at least one person working at least part-time in 2021

